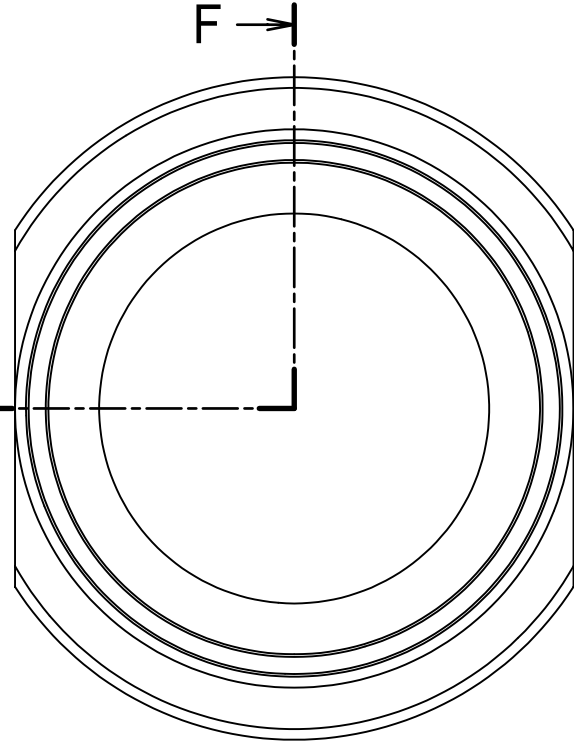
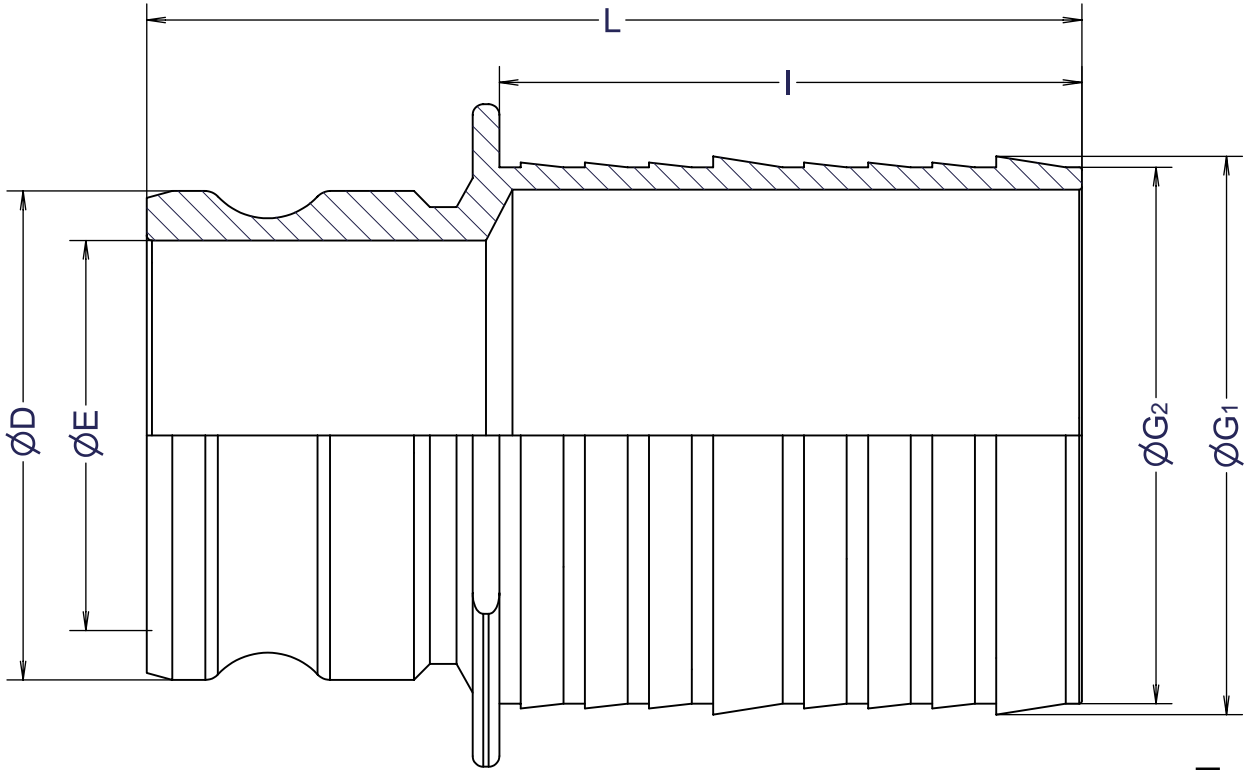


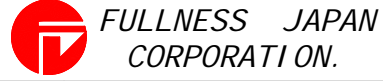
SIZE	PART No.	∅D	∅E	∅G ₁	∅G ₂	I	L
1 1/2" x 1"	ER15/10-AL	53.4	36.5	27.5	25.1	57	108
2" x 1 1/2"	ER20/15-AL	63	46	40	37.5	70.5	127.5
2" x 3"	ER20/30-AL	63	46	79	75	104	168
3" x 2"	ER30/20-AL	91.5	73	53	50	80	142
3" x 4"	ER30/40-AL	91.5	73	104.5	100.4	109	175
4" x 2"	ER40/20-AL	119.5	98	53	50	80	143
4" x 3"	ER40/30-AL	119.5	98	79	75	104.5	170

Units:mm



Section F-F

1	ボディ	AC4C-T6	1	
ITEM	PART NAME	MATERIAL	Q'TY	REMARKS
CUSTOMER		TITLE		
		MAX-LOK		
		MAX-ER		
		アダプター-Xホースタケノコ		
DATE		SCALE	DRAW	APPR
Jan.20'11		none	ToMo	
Temp.		DWG No.		
Drawing History		MAX-ER-01AL-15		3



FULLNESS JAPAN CORPORATION.